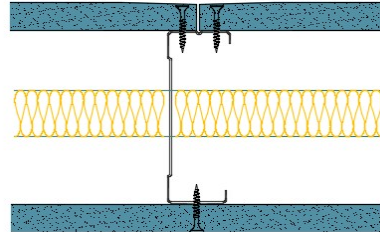


92-B-54(25) - SPEEDLINE System Data Sheet - Version V1 (24-10-23)

SPEEDLINE 92mm 'C' Stud Partition @600mm Ctrs,
with BG Gyproc 15mm SoundBloc each side,
25mm APR



System Performance Breakdown

Fire Resistance:

BS476 Part 22:1987:

Test Ref & Date or Applied Ref & Report:

Max Height:

Thickness:

Duty Grade: BS 5234: Part 2:1992:

Sound Insulation:

30/30 Minutes (Integrity/Insulation).

BTC 17439F - BRE Report P102396-1011A

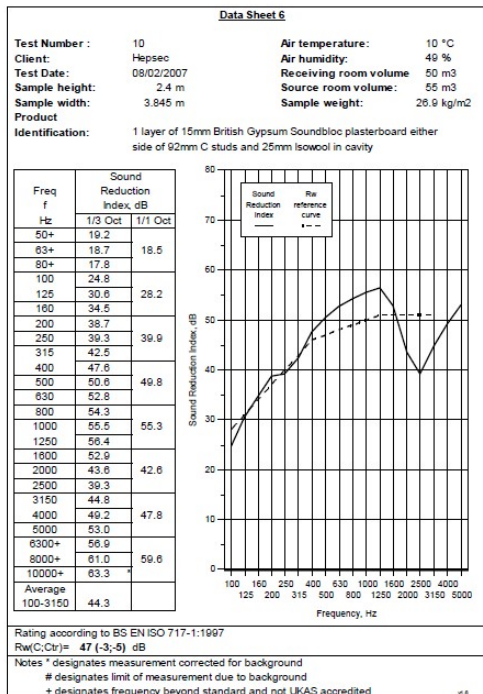
Refer to Speedline Specification Clause

124 mm. (At Base Track, Excluding Finishes)

Heavy - Annexes A-F

47 R_wdB, Date Tested or Assessed Against - 08/02/2007

S R L



TESTED AT ONE OF THE UKAS
ACCREDITED LABORATORIES
BELOW

B.T.C (H-Ref on Graph)	
B.R.E	
AIRO	
S.R.L	